

SES AMERICOM, INC. C-BAND TRANSITION QUARTERLY REPORT (published 9/30/21)

Overall Highlights



- **As of September 15, 2021, SES has completed all Phase I satellite transition activities and is fully focused on completing Phase II transition activities before the December 5, 2023 clearing deadline.**
 - SES has completed **15** Phase II satellite transitions so far.
 - SES's installers have conducted calls or visits with approximately **400** Phase II Incumbent Earth Station (IES) sites.
 - SES's installers have installed approximately **10%** of the antennas associated with Phase II.



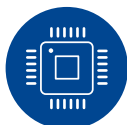
Satellite Manufacture and Launch Procurement

- **Satellite procurement programs are progressing as planned** with Boeing, Northrop Grumman and Thales.
 - The vendors have completed the design phase.
 - They have started assembly, integration and testing for the SES-18, SES-19, SES-20, SES-21 and SES-22 satellites.
 - Construction of the second ground spare, SES-23, began on June 1, 2021.
 - SES has submitted applications for authority to launch and operate the satellites.
- **Launch mission requirement reviews are progressing as planned** with ULA and SpaceX to launch the first four satellites in 2022.



Satellite Service Migrations

As of September 15, 2021, SES has completed **100%** of its Phase I and **18%** of its Phase II service transitions on its satellites.



Compression Technology

- **100% of uplink services subject to compression are currently in service.**
 - All uplink compression equipment has been installed, configured and tested at the earth station locations associated with the SES services requiring compression technology.
- **100% of the downlink equipment has been shipped to IES operators – including lump sum electees – receiving the SES satellite services requiring compression technology.**
 - All IESs subject to SES's Phase I Transition Plan and subject to compression have been fully transitioned and are on air.
 - The remaining compressed services and associated IESs will be transitioned by October 31, 2021.



Incumbent Earth Station Migration

- SES's primary IES equipment installation vendor, USSI, has completed virtual site surveys for **100%** of IESs subject to SES's Phase I clearing activities and is commencing Phase II IES activities.



TT&C/Gateway Construction/Service Transition

- **Construction of TT&C/Gateway facilities in Brewster, WA, and Hawley, PA, remains on target.**
 - TT&C antenna installations, along with associated ground equipment, are underway at both Brewster and Hawley.
 - Two platform migrations associated with Phase II have been completed.