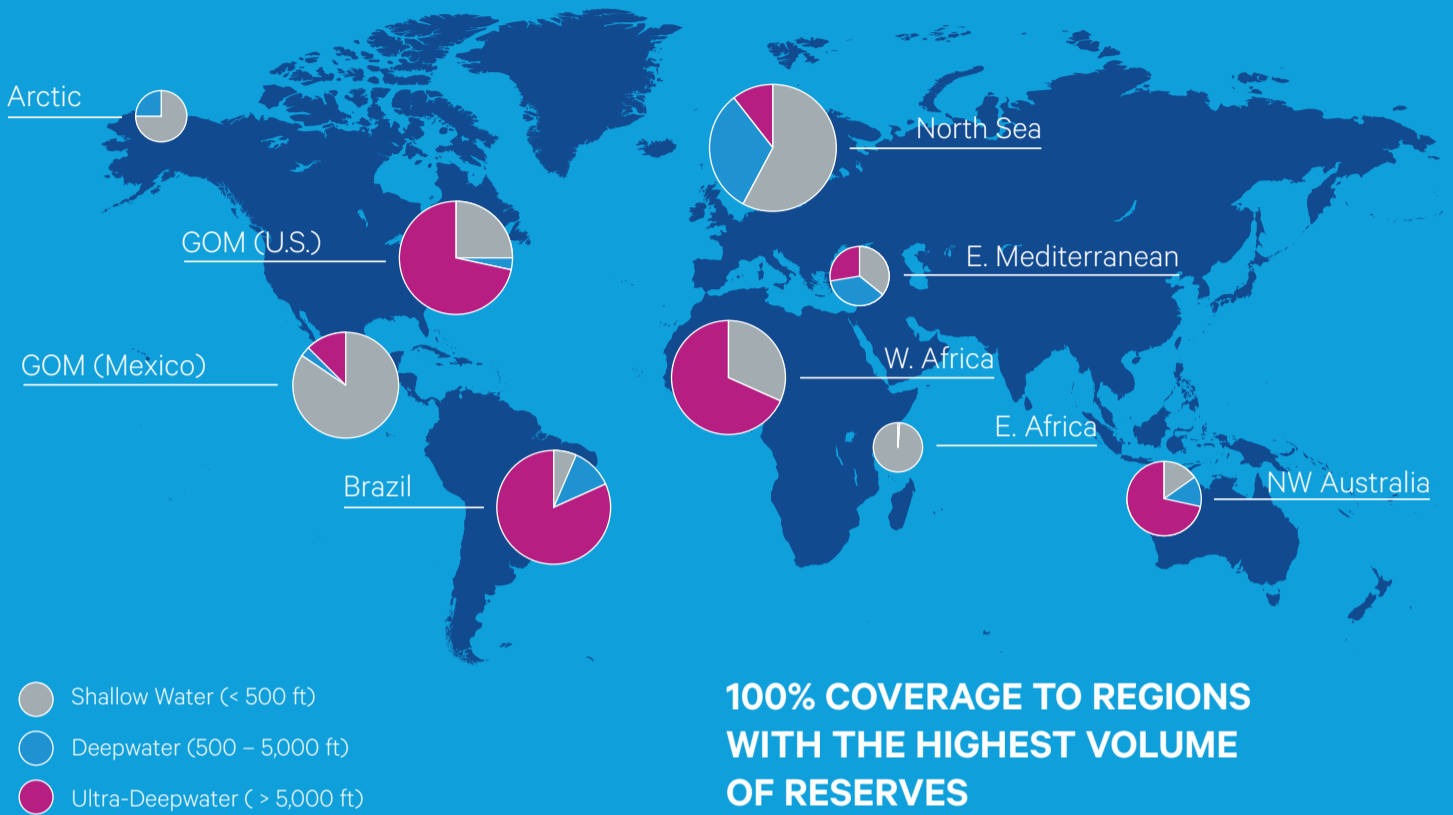


# TRANSFORMING OIL & GAS OPERATIONS AROUND THE GLOBE

DELIVERING CLOUD CONNECTIVITY WHEN AND WHERE IT'S NEEDED



**100% COVERAGE TO REGIONS WITH THE HIGHEST VOLUME OF RESERVES**

SES connectivity solutions provide high-performance and cost-effective cloud and edge connectivity to your most remote sites



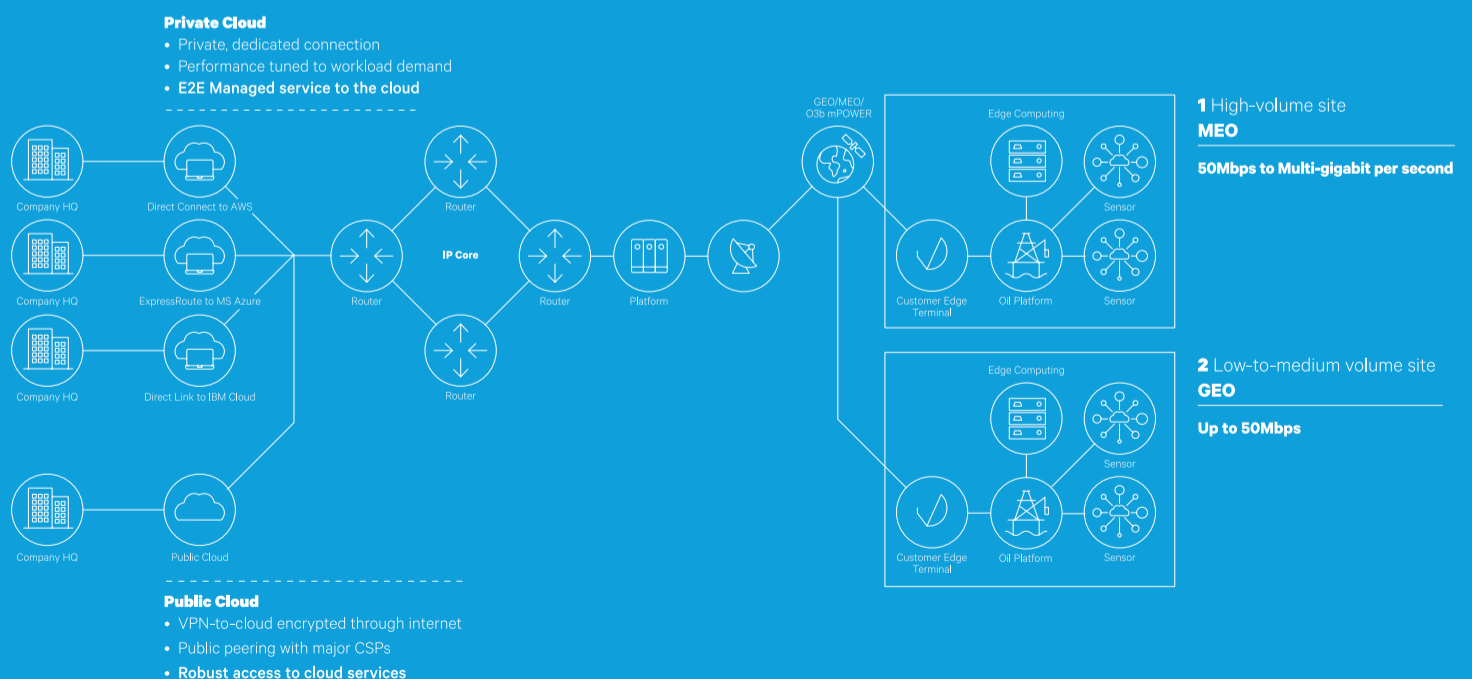
**HIGH BANDWIDTH FOR REMOTE ASSETS**



**LOW LATENCY FOR TIME-CRITICAL OPERATIONS**



**ENABLING DATA EXCHANGE BETWEEN THE EDGE AND CORE**



Contact us for more information at [Energy@ses.com](mailto:Energy@ses.com)



This document is for informational purposes only and does not constitute an offer by SES.

SES reserves the right to change the information at any time, and assumes no responsibility for any errors, omissions, or changes. All brands and product names used may be registered trademarks and are hereby acknowledged. For more information about SES, visit [www.ses.com](http://www.ses.com).