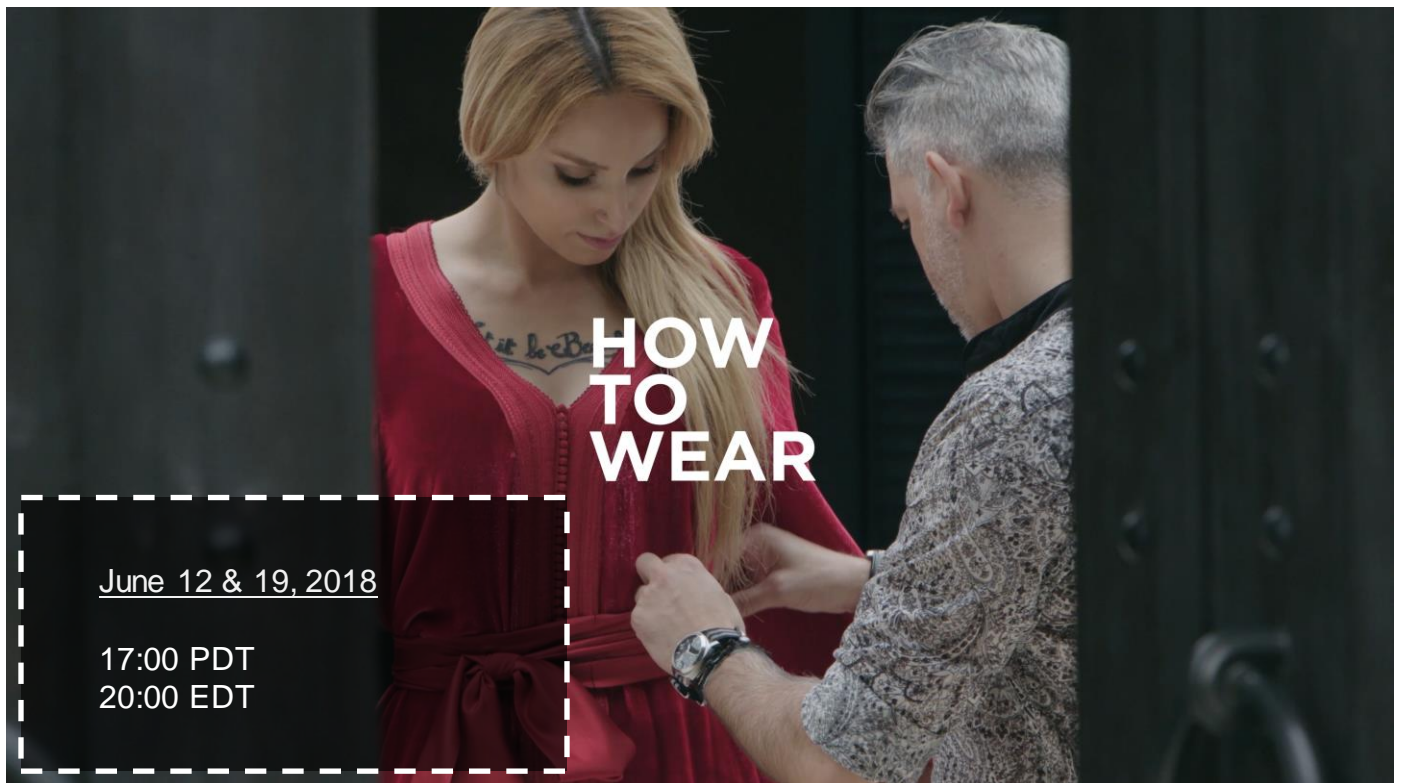


FASHION ONE **4K**

JUNE 2018 Highlights of the Month

SPECIAL

How to Wear



One garment, five different looks. A showcase of how staple outfits and accessories are taken on the runways and how fashionistas have donned it on the streets.

FASHION ONE **4K**

ORIGINAL PROGRAM

The Switch



THE
SWI T CH

Premieres June 18, 2018
every Monday

18:00 PDT
21:00 EDT

The Switch is a high concept series of “exchanging lives and finding yourself through the other person’s daily struggle”. Explore two social spheres with different values and codes that are the mainstream Fashion Industry and web content creators. The Switch has a Telenovela feel for the emotional arch and character interactions with and a Mockumentary genre with it’s behind the scenes overall visual look.

FASHION ONE 4K

SPECIAL

Dynasties: Families in Fashion (Episode 1)



Dynasties is an explorative shorts-series on Fashion's favorite families. From a family of supermodels to a powerhouse brand that has family at the center of everything, get to know Fashion's favorite families.