

VIDEO

SES in numbers

>7,500
channels



21 commercial
Ultra HD channels



>2,495
HD channels



>5,000
SD channels



33%

of all SES channels are HD



>2,750

broadcast TV channels
distributed



>500

Managed playout channels

>120

VOD platforms



SES share of global channels broadcast via satellite

Total



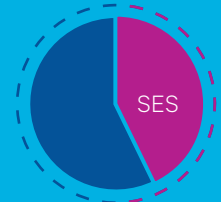
18%

HD



27%

UHD



43%

HD growth Europe*

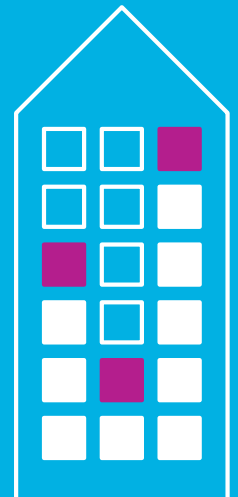
14% >750 channels

HD growth North America*

5% >1,360 channels

HD growth developing markets*

2% >370 channels



>600

Broadcast clients with long-term contracts

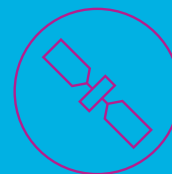
2017 increasing capacity for developing markets



SES-10



SES-12



SES-14



SES-15