

# ENTERPRISE

## SES in numbers

SES serves Enterprise customers in



SES serves



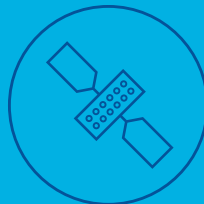
**>300**  
enterprise customers

**≈80%**  
of enterprise revenue from  
Tier-1 applications/managed  
services

Flexible and  
scalable global  
network/  
solutions



**>50** GEO



**12** MEO



The SES  
network reaches



**>1M**  
enterprise-grade  
data terminals

Connecting the unconnected

O3b provides more  
than **10 Gbps**  
to remote islands  
around the globe



Can enable up to  
**150 Mbps**

of LTE backhaul per tower



Growth of average  
bitrate per site

Industry-leading latency  
for any satellite-based  
broadband system

**<150 ms**



**99.99%**  
measured service  
availability



Compared to  
**99.97%** benchmark service availability